

The Art Of Texture And Material

# TABLE TOP



NEW  
PRODUCT

LOOK »



FURNITURE SOURCING  
EXPERT



FURNITURE SOURCING  
EXPERT

VOL.06

FSE | The Heart of Dining Furniture



**P3**  
FM Series



**P15**  
HPL Series



**P9**  
GZ Series



**P19**  
FV Series



**P29**  
FG Series



**P27**  
CM Series



**P33**  
FT Series



## MORE THAN A PIECE OF FURNITURE

FSE, and its team, has a long standing reputation for serving the needs of the hospitality industry - hotels, casinos, public spaces, convention centers, restaurants, and senior living/assisted care facilities. At FSE, we never stop exploring new ideas, because the world of hospitality furnishing never stops evolving. We move with you, with your way of living and decorating in any environment.

## Table Top-Melamine

### FM



Thickness available  
25mm 30mm 38mm 48mm

Edge available: PVC/aluminium film PVC edge/steel frame/aluminum frame/stainless steel frame  
PVC

Size can be customize

FM Series is a comprehensive table collection that lends itself to a wide variety of applications for work, home and hospitality. It includes meeting tables, conference tables, cafe tables, lounge tables, collaboration tables and side tables, each offering a choice of shapes, colours, material.



**FM-08**

**FM-15**



Live naturally and enjoy excellent meals together. Eating should not be a habit, but a lifestyle. The table we sit at is the most important basis for this.

**FM-23**



**FM-24**



**FM-19**



**FM-21**



**FM-20**





**FM-25**



**FM-06**



**FM-26**



**FM-04**  
Vintage Oak FHS



**FM-27**



**FM-05**  
Sonoma Oak



**Table Top-Melamine**

**GZ**



Thickness available  
25mm 30mm 38mm 48mm

Edge available: PVC/aluminium film PVC edge/steel frame/aluminum  
frame/stainless steel frame

PVC

Size can be customize

The foundation of GZ series is a base design for each table which gives harmony, elegance and coherence to a space, allowing them to be specified across a diverse range of environments



**GZ-21**

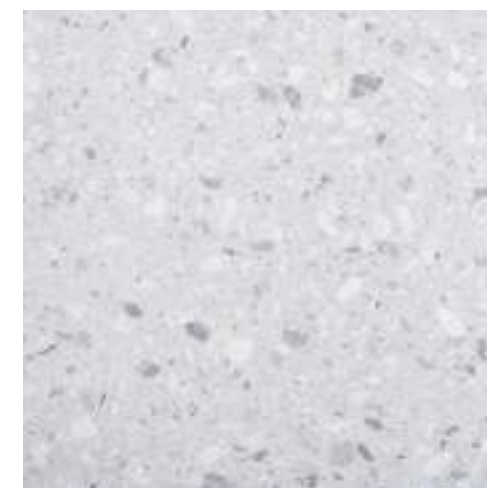


**GZ-07**

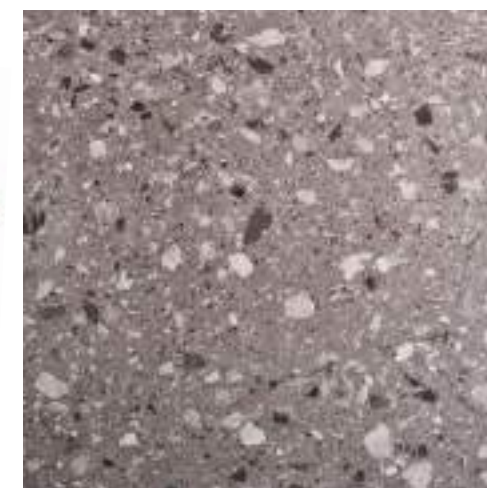




**GZ-22**



**GZ-23**



**GZ-14**



**GZ-24**





**GZ-13**



**GZ-18**

**GZ-06**



**GZ-15**



**GZ-11**



**GZ-16**

**GZ-12**



**GZ-10**



**Table Top-HPL**  
**HPL**



Thickness available  
25mm 30mm 38mm 48mm

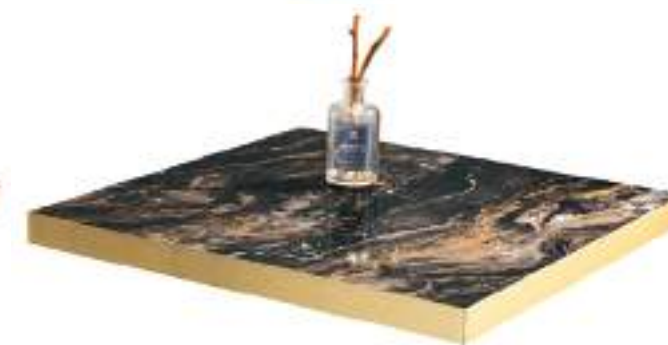
Edge available: PVC/aluminium film PVC edge/steel frame/aluminum frame/stainless steel frame  
PVC/

Size can be customize

Accompanied by table tops with curved edges and fluid shapes (there are no harsh angles in the range) HPL series encourages people to gather round; it' s collaboration without hierarchy.



**HPL-7**



**HPL-2**



**HPL-5**





**HPL-9**



**HPL-6**



**HPL-1**



**HPL-4**



**HPL-8**



**HPL-3**



Table Top-Veneer 木皮系列  
FV 系列



Thickness available  
25mm 30mm 38mm 48mm

Edge available: veneer/solid wood

Size can be customize



**FV-10B**  
Walunt



Live naturally and enjoy excellent meals together. Eating should not be a habit, but a lifestyle. The table we sit at is the most important basis for this.



**FV-09**  
Ebony



**FV-11D**  
Ash Pattern



**FV-11E**  
Ash



**FV-11A**  
Ash



**FV-11C**  
Ash Pattern



**FV-04B**

Zebra B



**FV-12B**

Red oak B



**FV-08B**

Rose Wood B



**FV-08A**

Rose Wood A





**FV-11B**

Ash Pattern B



**FV-10C**

Wanut Pattern C



**FV-14**

Rose Chestnut



**FV-15**

Sapele



**FV-17**

Rose wood with walnut pattern



## Table Top-Ceramic

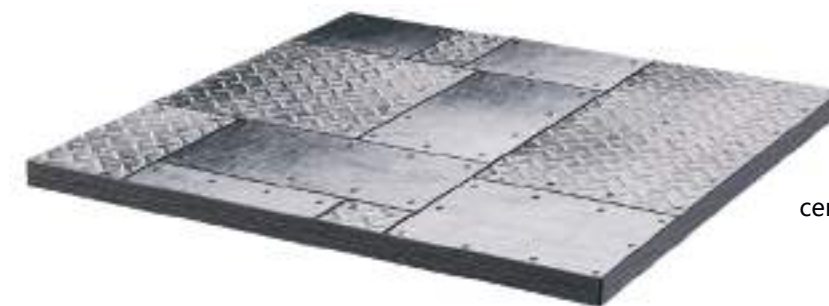
### CM

Thickness available:

27mm 45mm

Edge available: solid wood/PVC/aluminium film PVC edge/steel frame/  
aluminum frame/stainless steel frame  
PVC

Size can be customize



**CM-01**

plastic edge  
ceramic size 600\*600mm



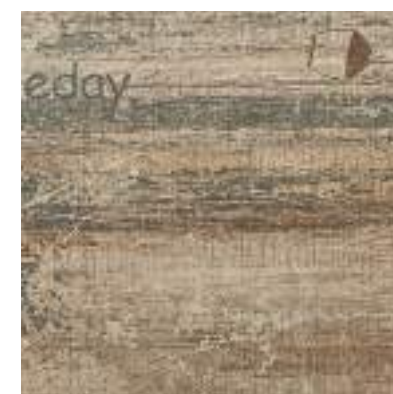
**CM-02**

metal frame with rivet  
ceramic size 800\*150mm



**CM-07**

metal frame with rivet  
ceramic size 800\*150mm



**CM-05**

ceramic size  
600\*600mm



**CM-11**

ceramic size  
300\*300mm



**CM-12**

ceramic size  
300\*300mm



**CM-04**

metal frame  
ceramic size 600\*600mm



**CM-16**

solid wood edge  
ceramic size 600\*600mm



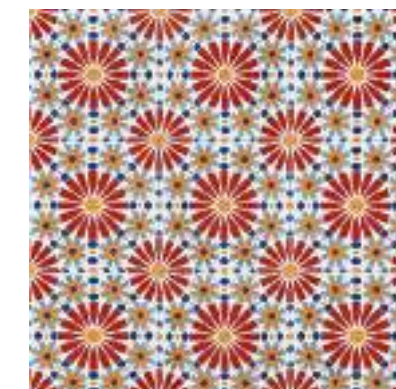
**CM-13**

ceramic size  
300\*300mm



**CM-14**

ceramic size  
300\*300mm



**CM-15**

ceramic size  
300\*300mm



**Table Top-STONE  
FG**



Lauren White



Lauren Black



Snow Mountain



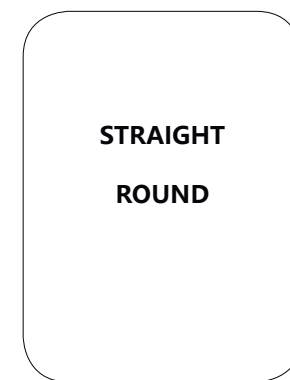
Vik Grey

Thickness available  
12mm 30mm 36mm 45mm

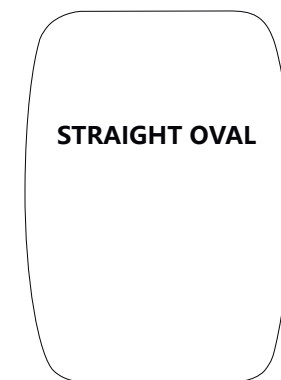
Edge available: steel frame/aluminum frame/stainless steel frame

Size can be customize

**CUSTOMIZE SHAPE**



**STRAIGHT  
ROUND**



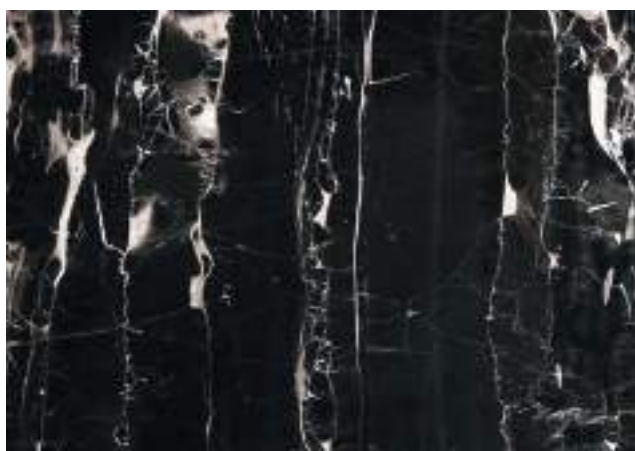
**STRAIGHT OVAL**



**STRAIGHT  
SAFETY**



A table with a strong personality, characterized by the important stainless steel edge. Interesting the marble tops of various shapes and sizes, which are also modular, giving the possibility to create large custom tables as well.



**FG-07**



**FG-08**

Arabescato

**FG-09**

Silver dragon



**FG-10**

Bianco Carrara Venato

**Table Top- Solid wood**  
**FT**



Thickness available  
25mm 35mm 45mm

Size can be customize



**FT-03**  
Red oak



**FT-05**  
Okoume



**FT-02**  
Catalpa wood





**FT-06**  
Ash



**FT-04**  
Ash



**FT-01**  
Hovenia duicishund



Table Bases Summary



Table Bases Summary



FM8063



FM8061



FM8060



FM8062



FM8064



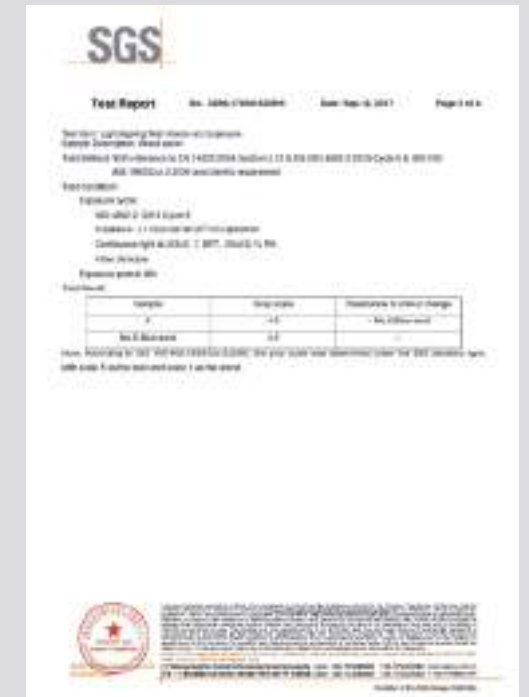
FM8045



FM8046



Resistance to Cigarette Burn



Light Ageing Test



Resistance to Scratching



Resistance to Dry Heat